

Screen Capture Images From Ecology Water Quality Atlas

Wetland D3 Questions Map Supplement

Submitted by Robynn Sleep, Water Consultant

Page 2 of 3

Clockwise from top left: 1. Boundary of Medical Lake showing the Headwaters of Deep Creek HUC 12 boundary extending down from the North edge of town to include the wetland. 2. Location of Mangis-Roberson Wetland with TMDL overlay in light purple showing it is in the TMDL area for Spokane River DO. 3. Page from TMDL DO Report showing Medical Lake is in the study area for the TMDL. 4. TMDL DO dark purple with popup stating the name of the TMDL that applies.

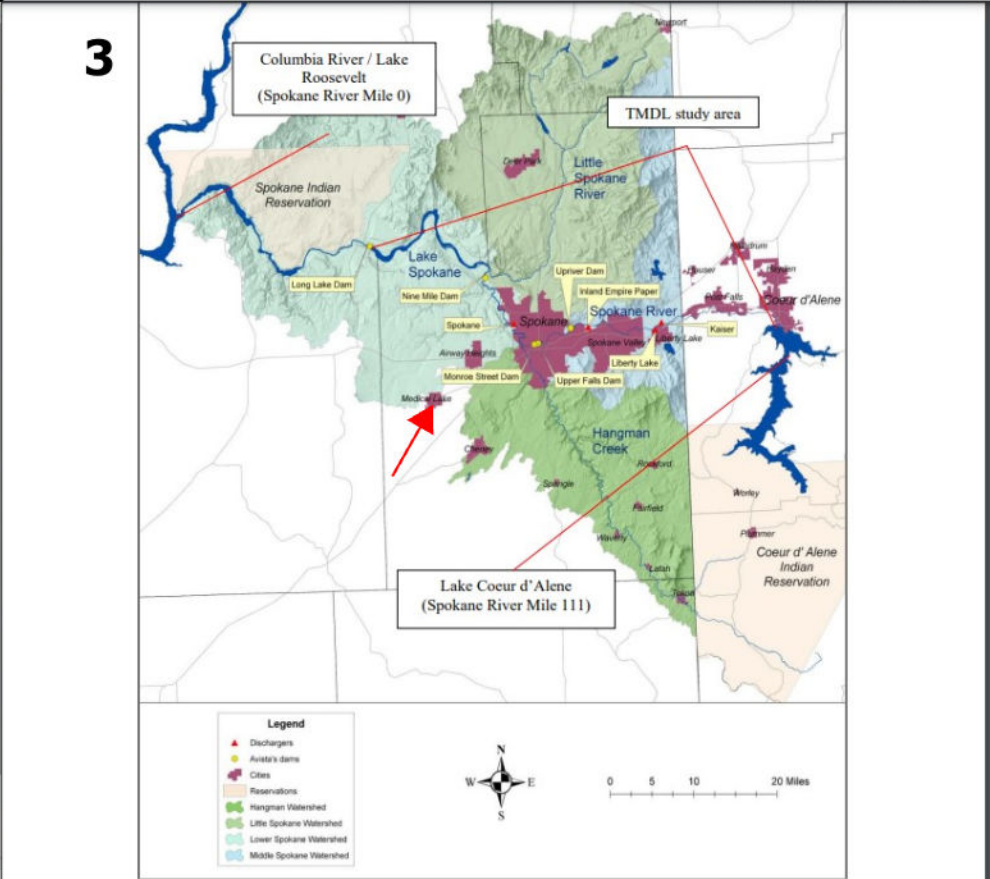
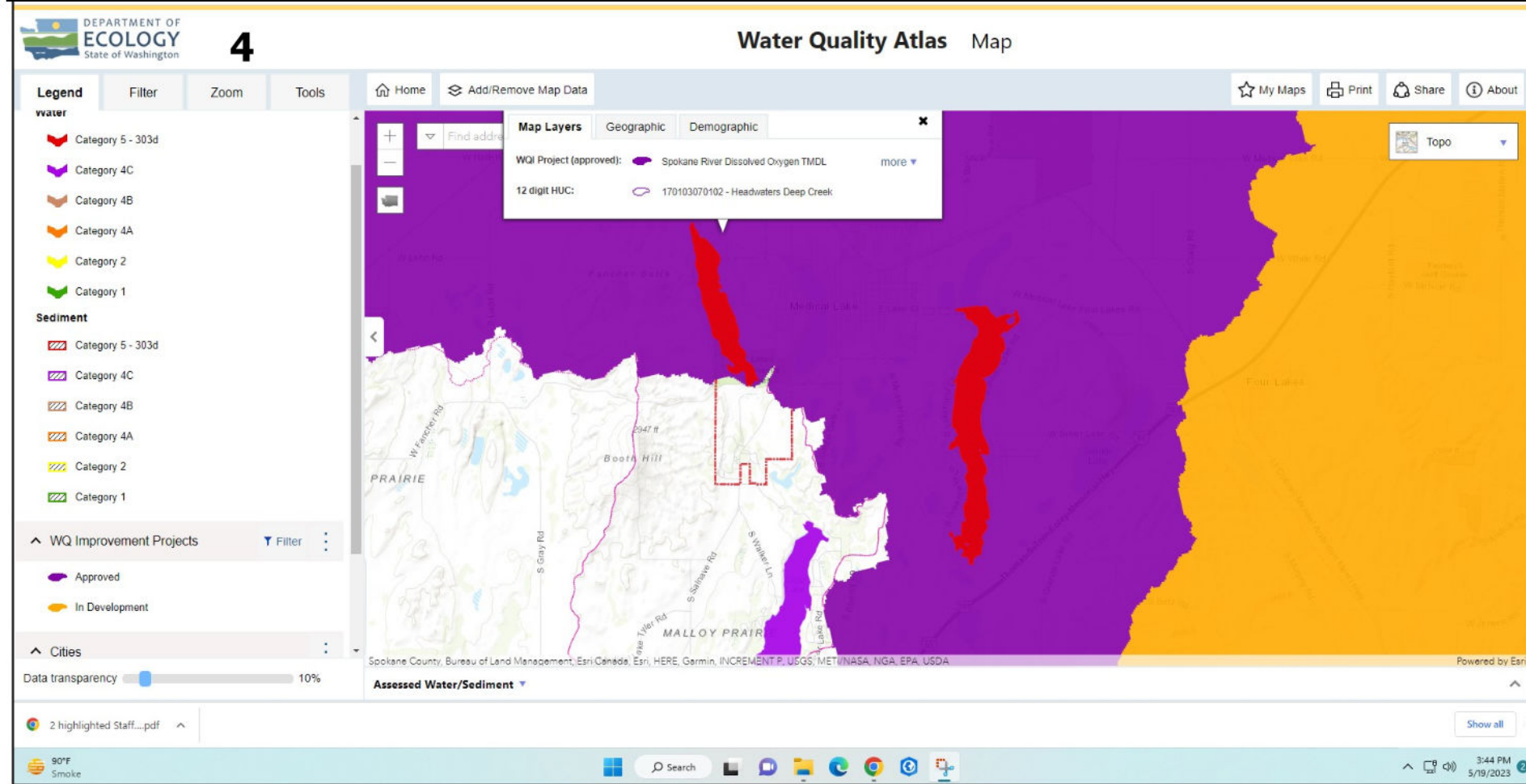
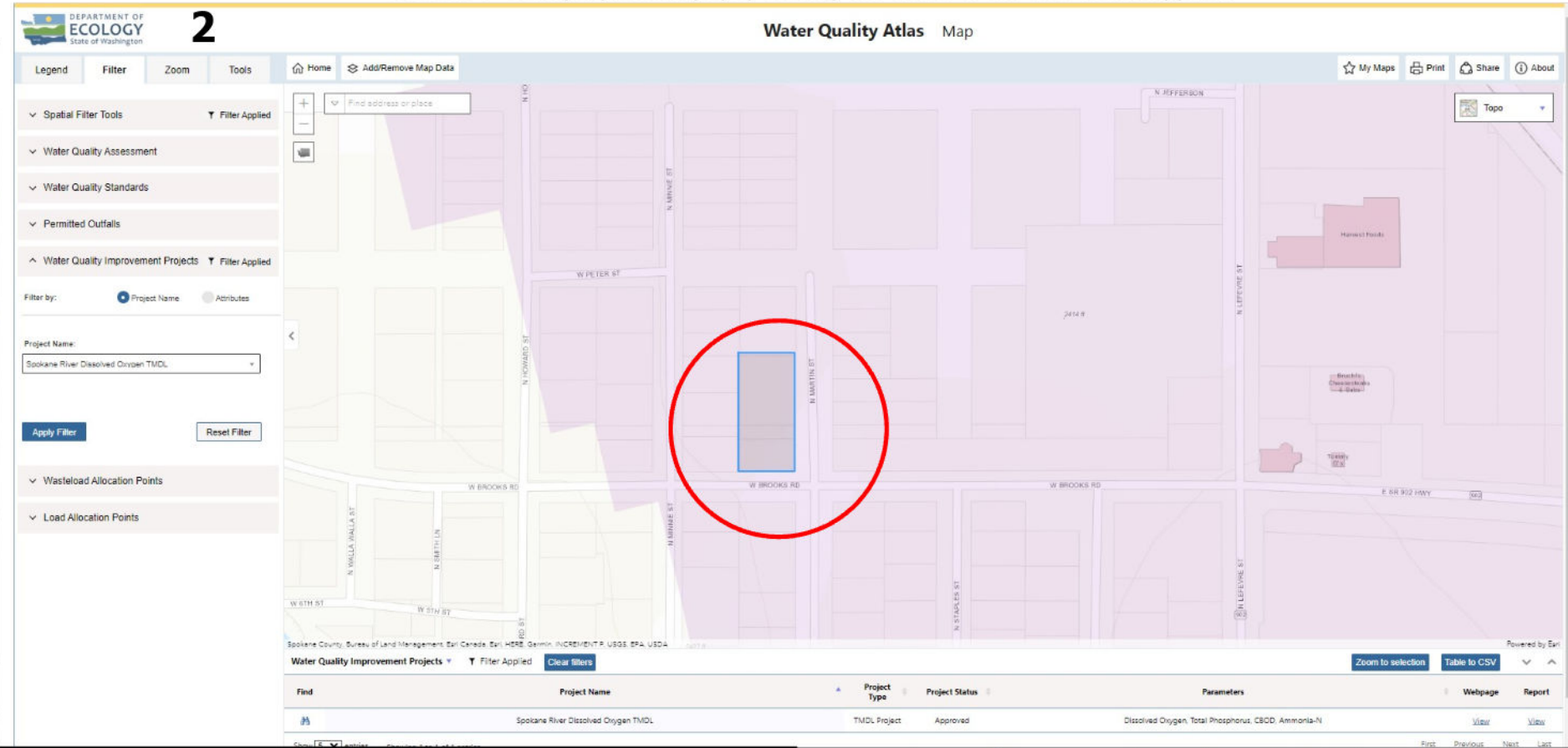
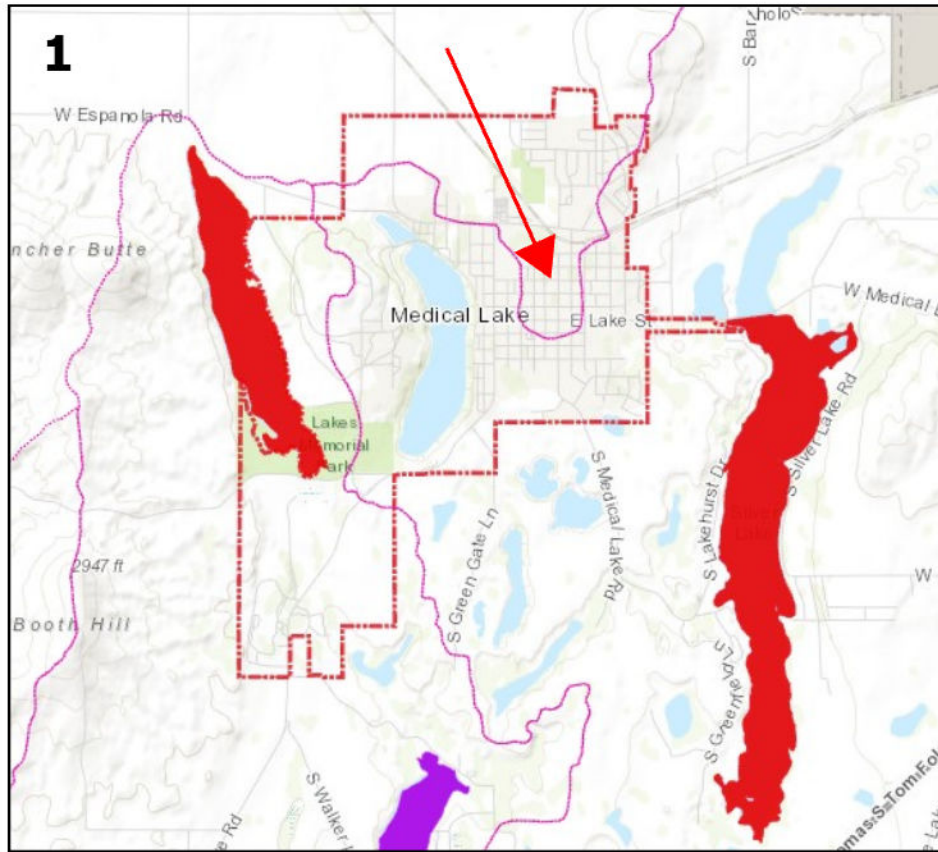


Figure 1. Spokane River watershed map. The study area for this TMDL is the portion of the Spokane River from the outlet of Lake Coeur d'Alene to the Lake Spokane outlet at Long Lake Dam.